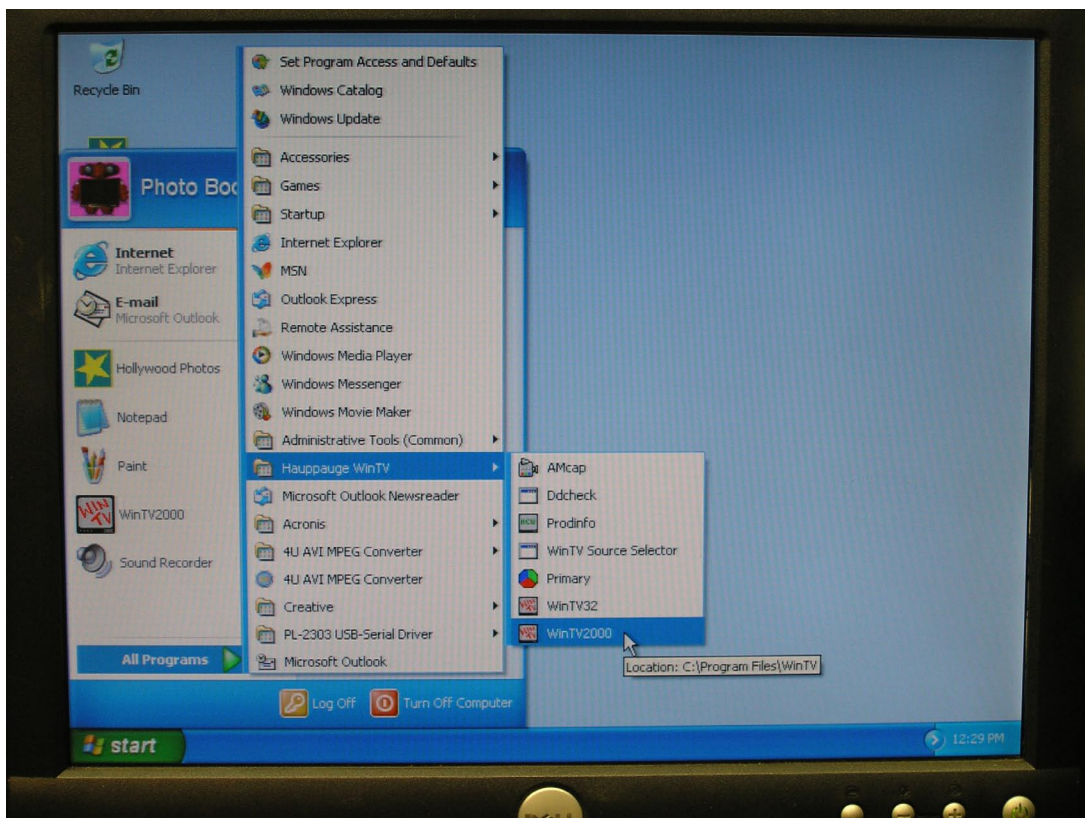


SMART 3 IN 1 HOLLYWOOD PHOTOS: SETTING YOUR BOOTH TO PRINT BLACK&WHITE PHOTOS



While it doesn't necessarily work well to combine black & white photos with the colorful Backgrounds and Outrageous Characters in the Hollywood Photo Booth, some operators may want to set their booth to print b&w photos in 1,2,4 pose mode or the Wedding/Event mode.

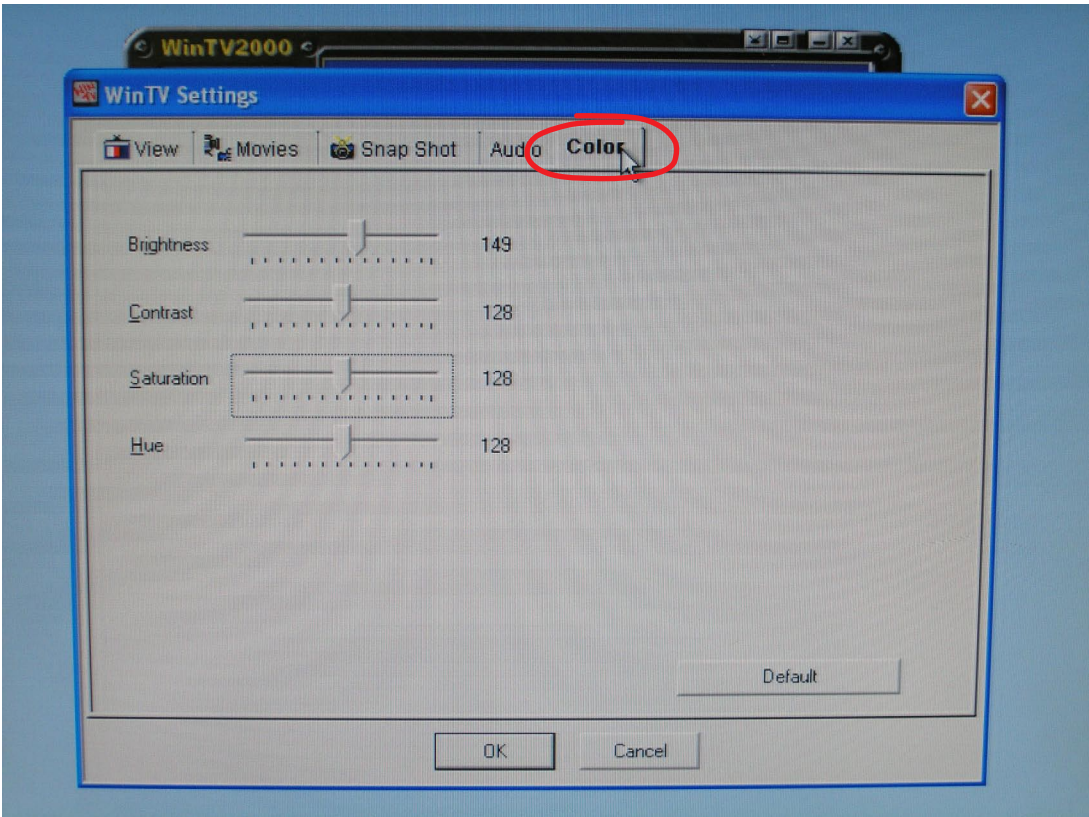


If start, if your photo booth program is running, right-click anywhere on the opening screen and choose "Exit" to stop the program. (Shown at top left)

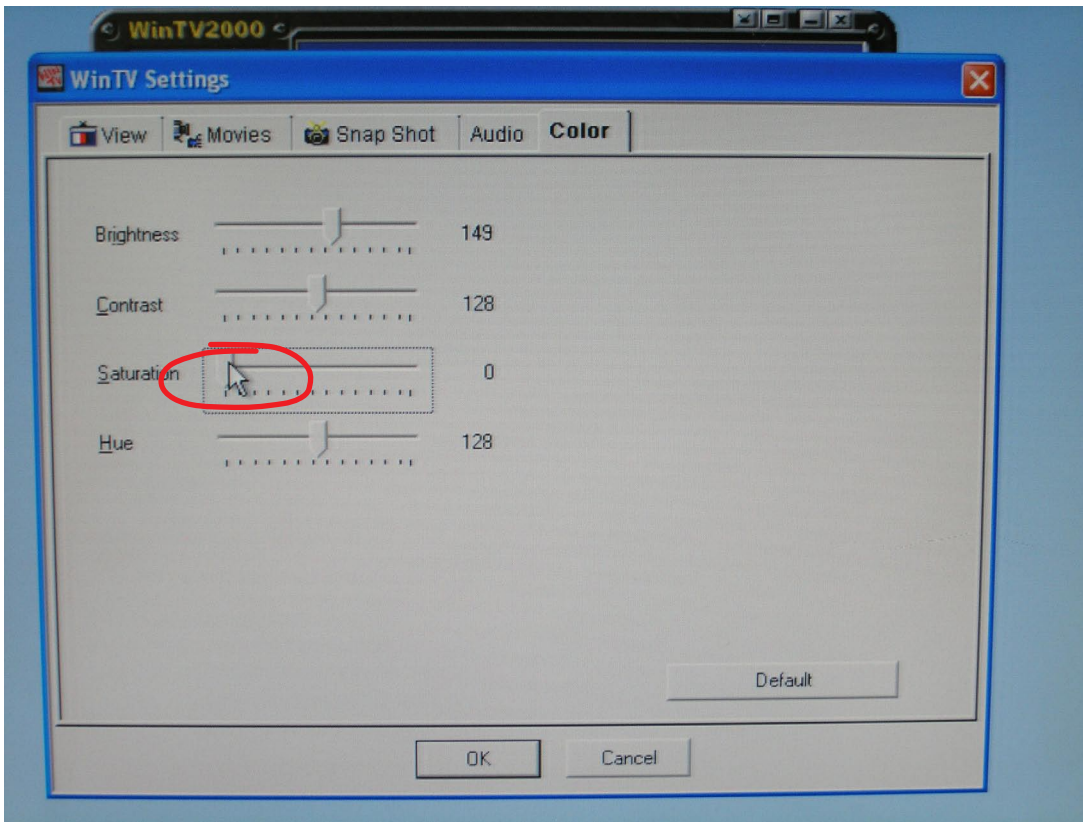
Then click the Start button at the lower left corner of the screen, move to All Programs, then Hauppauge WinTV, then WinTV2000.



The program for the WinTV capture card should open. When it does, click the Preferences button.

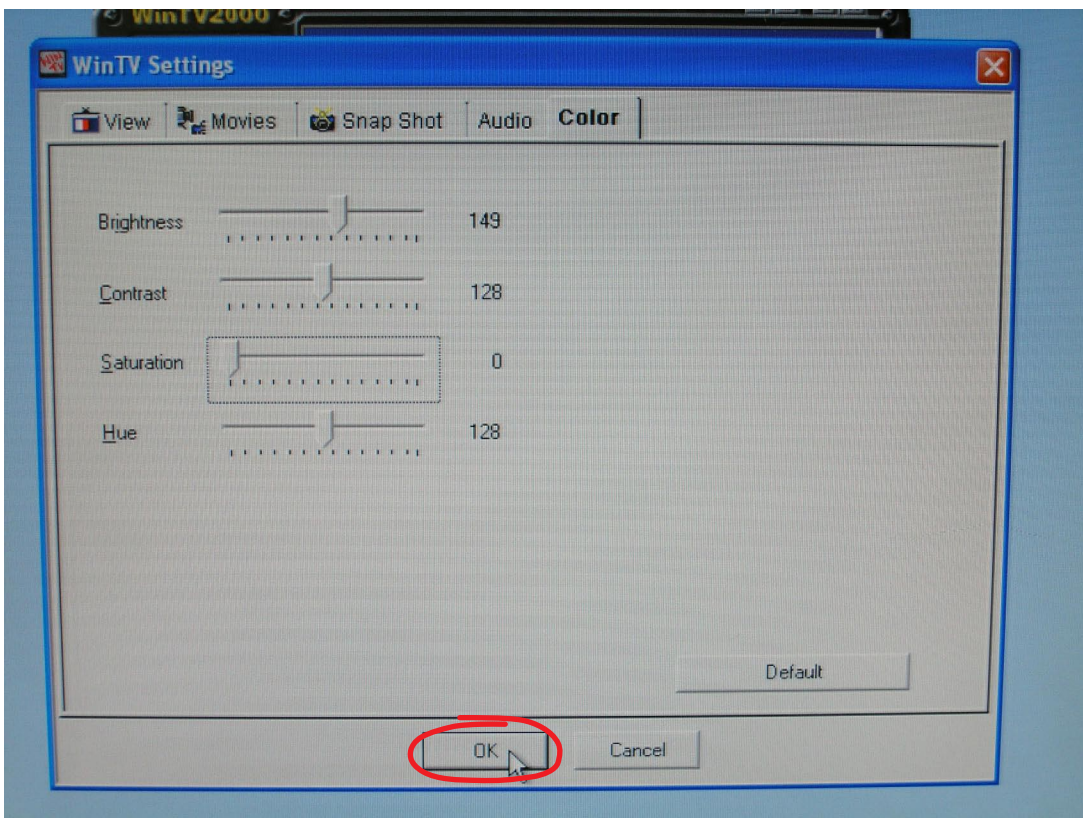


Click on the Colors tab at the top right of the window that opens. You should now see a screen like the one at left.



Find the Saturation category and move the slider bar all the way to the left.

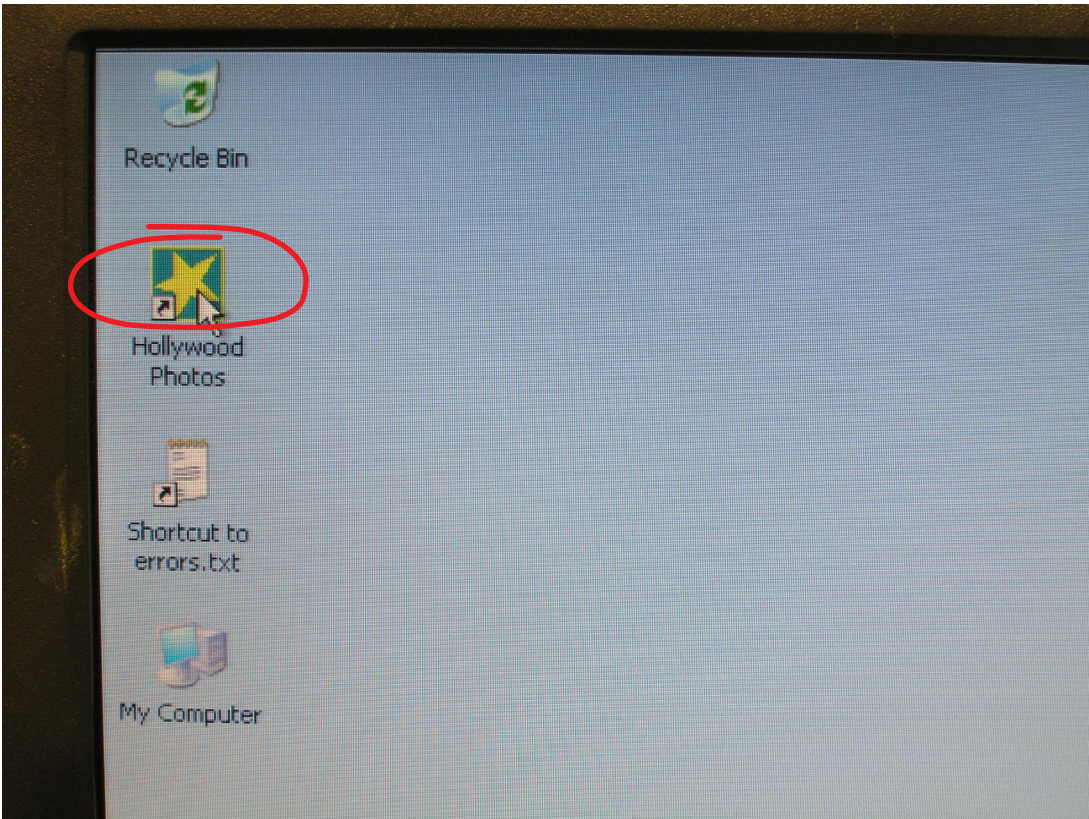
(Note: If you need to return back to color printing at a later time, follow these steps and move the Saturation slider back to 128, like the Contrast and Hue are set at.)



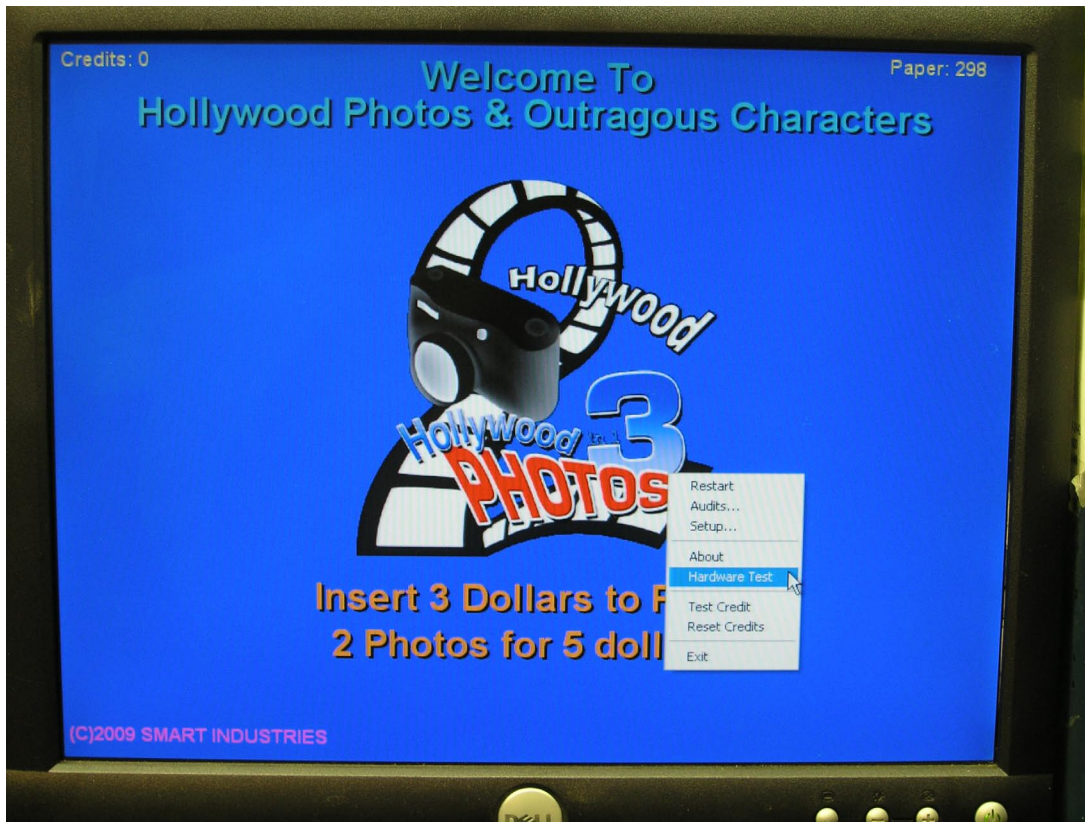
Click OK at the bottom of this window.



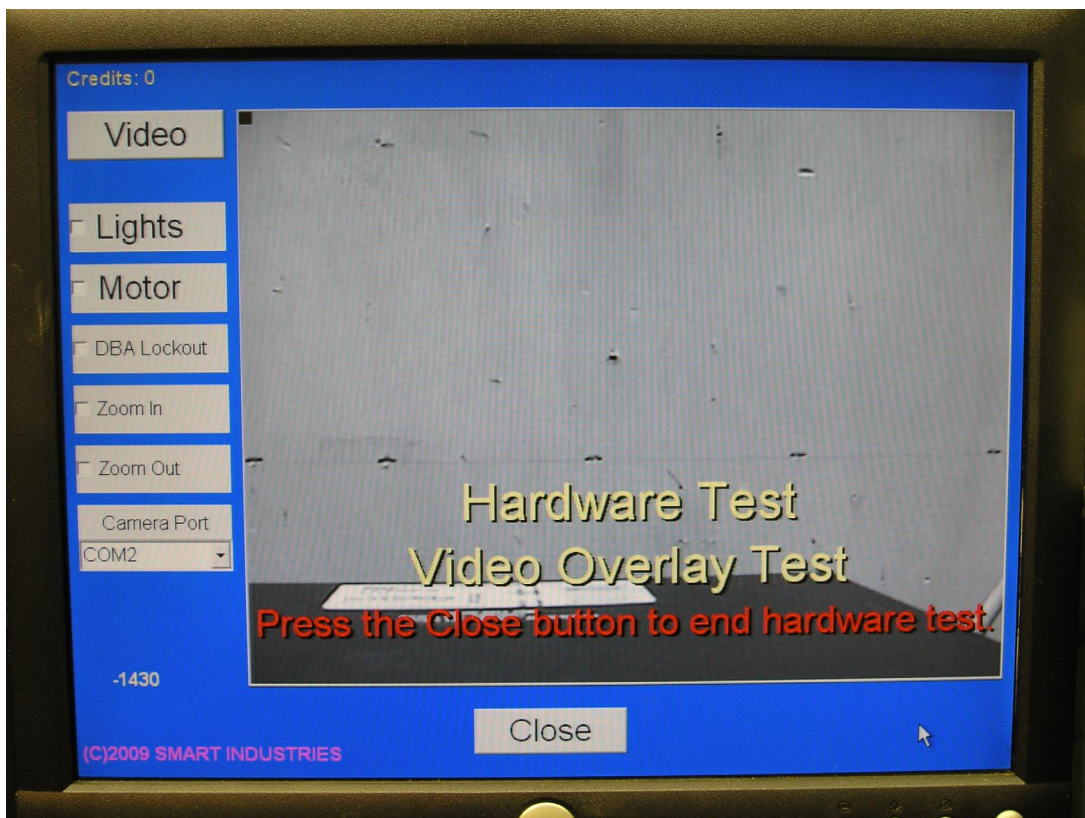
Click on the X at the top right of the WinTV program.



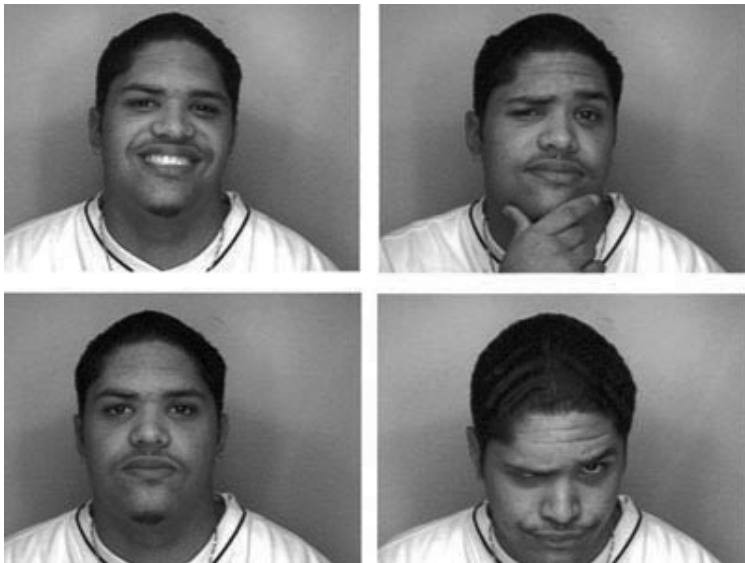
Double-click the Hollywood Photos shortcut icon on the desktop to restart the photo booth program.



To make sure the photos taken in the booth will be black & white, right-click anywhere on the initial screen and choose "Hardware Test".



Everything on your screen should still be in color except what is being filmed by the camera in the center of the screen (which should appear black & white).



Now your customers should be able to see how the final print will look as they go through the steps of taking their photos. At left are samples of how the final prints appear. As you can see, the best results are with the standard 1,2,4 pose or Wedding/Event mode (6-pose). However, you can always have Smart Industries create black & white backgrounds or character art if you want anything specific b&w designs.

